



Cisco ACI Multi-Site Hardware Requirements Guide, Release 3.0(x)

[New and Changed Information](#) 2

[Hardware Requirements](#) 2

[Hardware Compatibility](#) 4

Revised: May 19, 2021

New and Changed Information

The following table provides an overview of the significant changes to the organization and features in this guide from the release the guide was first published to the current release. The table does not provide an exhaustive list of all changes made to the guide.

Table 1: Latest Updates

Release	Details
3.0(2)	Removed the list of specific leaf switches. Cisco ACI Multi-Site has no dependency on the fabrics' leaf switches and as such supports the same leaf switch models as the Cisco APIC. The full list of supported hardware is available in the ACI-mode Switches Hardware Support Matrix .
3.0(1)	First release of this document.

Hardware Requirements

Spine Switch Requirements

Cisco ACI Multi-Site requires the following Cisco ACI-mode spine switches:

- Cisco Nexus 9500 platform switches with -EX or -FX line cards and -E or -E2 fabric modules
Cisco Nexus 9500 platform switches with non -EX/-FX line cards or using non -E/-E2 fabric modules are not supported with Multi-Site
- Cisco Nexus 9316D-GX switches
- Cisco Nexus 9332C and 9364C switches
- Cisco Nexus 9336PQ switches for leaf-to-spine connectivity within a site only
These switches are not supported for inter-site connectivity with Multi-Site

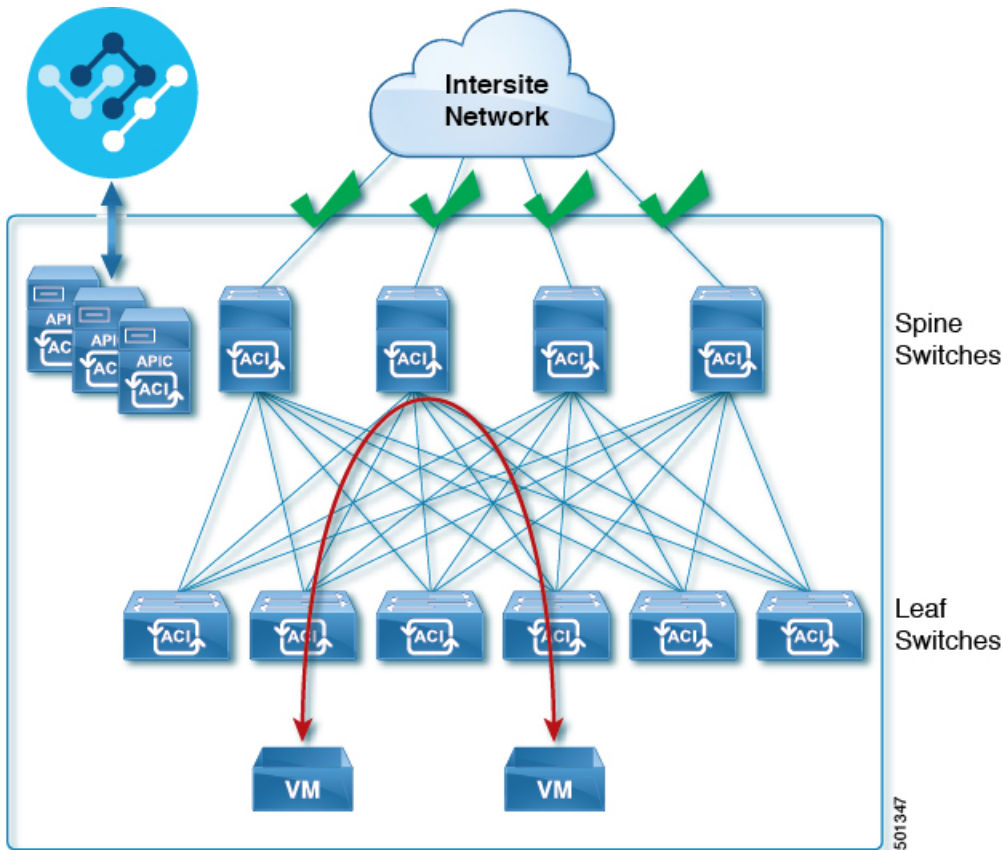
For the list of specific switch models supported by Cisco ACI Multi-Site, see [Hardware Compatibility, on page 4](#).

Leaf Switch Requirements

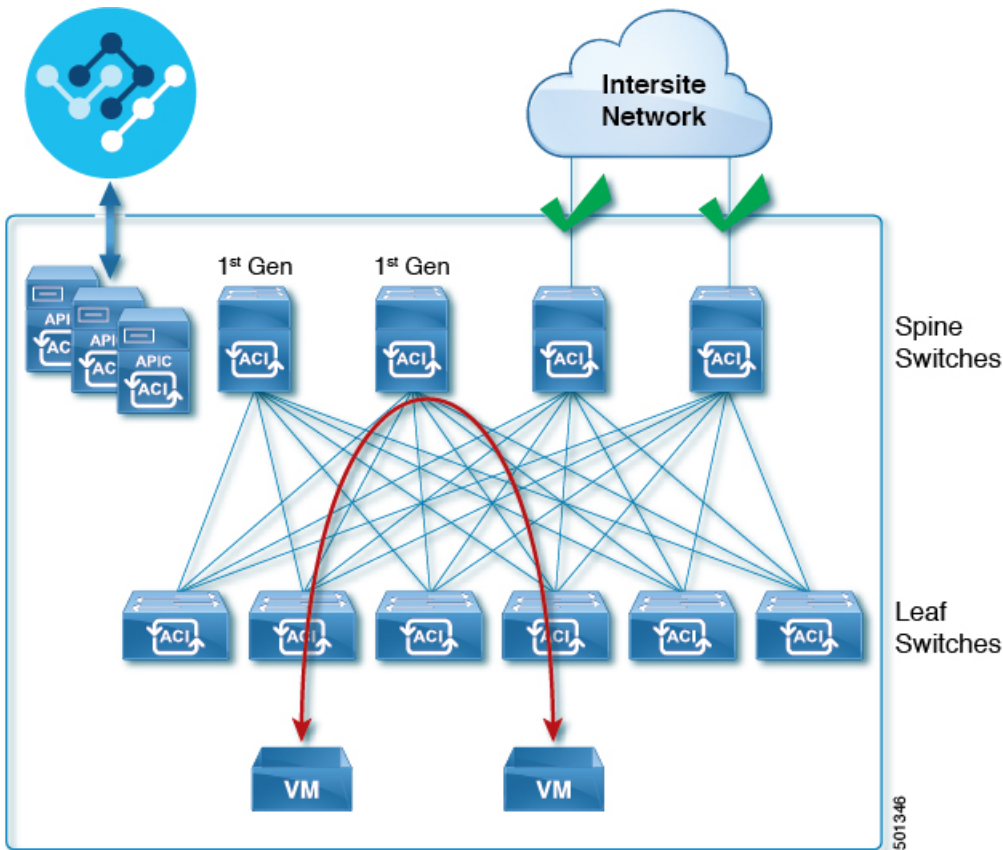
Cisco ACI Multi-Site has no dependency on the fabrics' leaf switches and as such supports the same leaf switch models as the Cisco APIC. The full list of supported hardware is available in the [ACI-mode Switches Hardware Support Matrix](#).

IPN Connectivity Across Sites

The following figure shows how spine switches supported with ACI Multi-Site are connected to the intersite network.



You can choose to mix spine switches supported by ACI Multi-Site with switches that are not supported within the same Cisco APIC fabric but only the supported switches can connect to the intersite network as shown in the following figure.



Hardware Compatibility

Spine Switches

The following table lists the Cisco ACI-mode spine switches, modules, and line cards compatible with Cisco ACI Multi-Site.

Cisco Nexus 9000 Series Spine Switches	PID	Line Cards	Fabric Modules
Cisco Nexus 9316D-GX	N9K-C9316D-GX	N.A.	N.A.
Cisco Nexus 9332C	N9K-C9332C	N.A.	N.A.
Cisco Nexus 9364C	N9K-C9364C	N.A.	N.A.
Cisco Nexus 9504	N9K-C9504	N9K-X9732C-EX N9K-X9736C-FX N9K-X9736Q-FX	N9K-C9504-FM-E

Cisco Nexus 9000 Series Spine Switches	PID	Line Cards	Fabric Modules
Cisco Nexus 9508	N9K-C9508	N9K-X9732C-EX N9K-X9736C-FX N9K-X9736Q-FX	N9K-C9508-FM-E N9K-C9508-FM-E2
Cisco Nexus 9516	N9K-C9516	N9K-X9732C-EX N9K-X9736C-FX N9K-X9736Q-FX	N9K-C9516-FM-E2

Leaf Switches

Cisco ACI Multi-Site has no dependency on the fabrics' leaf switches and as such supports the same leaf switch models as the Cisco APIC. The full list of supported hardware is available in the [ACI-mode Switches Hardware Support Matrix](#).



Americas Headquarters
Cisco Systems, Inc.
San Jose, CA 95134-1706
USA

Asia Pacific Headquarters
CiscoSystems(USA)Pte.Ltd.
Singapore

Europe Headquarters
CiscoSystemsInternationalBV
Amsterdam,TheNetherlands

Cisco has more than 200 offices worldwide. Addresses, phone numbers, and fax numbers are listed on the Cisco Website at www.cisco.com/go/offices.