



Working with Zones, Groups, and Locations

User Roles: Administrator, Content Manager

This module provides an overview of the Cisco Vision Director hierarchy of zones, groups, and locations to manage content delivery in a venue.

Information About Zones, Groups, and Locations

Cisco Vision Director supports reliable delivery of content to thousands of endpoints, providing venues the flexibility to place numerous TVs throughout the concourses, in locations such as:

- Bars and restaurants
- Luxury suites
- Locker rooms
- Concession areas
- Restrooms
- Back offices

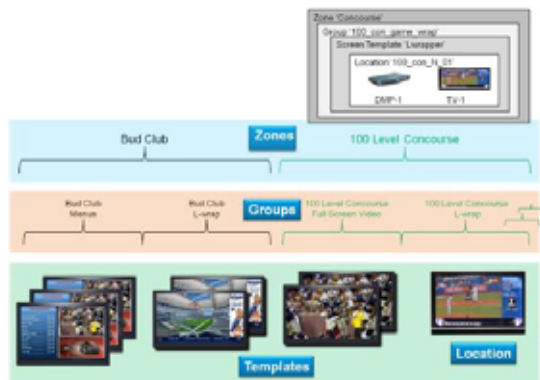
Digital content, in the form of still or animated graphics and video ad insertions, can be targeted and delivered—with accompanying event video in HD or separately—to any display or group of displays throughout the venue.

When you have hundreds or thousands of TVs on which you want to display different video signage, sponsored content, TV channels, and menus, you need a way to automate the configuration and manage the endpoint locations.

Cisco Vision Dynamic Signage Director defines a hierarchical architecture that allows you to easily identify the location of the displays and manage the content that they are playing.

To provide a logical way of organizing the hundreds to thousands of endpoints in a venue, Cisco Vision Director implements a hierarchy of the following entities shown in [Figure 1, on page 68](#):

- Zones
- Groups
- Locations

Figure 1 Zones, Groups, Templates, and Locations Hierarchy

Zones

A *zone* is typically a physical area in the venue. Examples of zones include concourses, clubs, and team stores. [Figure 2, on page 68](#) shows the nested hierarchy with a zone named 'Concourse' at the top level.

Figure 2 Nested Hierarchy with Zone at Top Level

Groups

Groups are the second level in the hierarchy. You can think of groups as “children” or subsets of a zone. A *group* defines a collection of devices (DMPs/TVs) that all display the same content, using the same template. Groups consist of a set of *locations* in the hierarchy.

Example

Consider the case of TVs in a concourse area on which you want to show a game feed with sponsored advertising. Rather than configure each individual TV to show this content, you can configure them as a group and change all of the TVs with a single action. You can then associate the group to a zone to identify the area of the stadium where they are located.

[Figure 3, on page 69](#) shows a group named "100_con_game_wrap" that is part of the "Concourse" zone. As indicated by the name of the group, this is for all of the TV displays using the game wrap format (from a screen template) in Concourse 100 of the venue.

Figure 3 Group within a Zone



Locations

Locations are the lowest level in the Cisco Vision Director hierarchy. A *location* defines a specific place in the venue where a TV and DMP reside.

Figure 4, on page 69 shows a location named " 100_con_N_01" which indicates that the TV-1 and DMP-1 are located on the North Concourse 100 level.

Figure 4 Location Example



Locations help you keep track of exactly where a TV and DMP is physically located in the stadium. For example, if someone tells you that a TV in a restroom at the concourse 100 level is not working, you can refer to the location information to quickly find the TV and fix it.

Default Zones from Legacy Cisco Vision Dynamic Signage Director Releases

Note: In older Cisco Vision Director Releases, the following default zones were provided:

- Delay_zone
- Emergency_zone
- Non-event_zone

These zones will only appear in your system if you have upgraded from a release where they were introduced, and if they were used.

Consider the following guidelines for these default zones:

- Assign a group to each of the default zones.
- Default zones cannot be renamed.
- To assign all media players to one of these zones, create a new group, add all media players to that group, and then add that group to the zone.

- Any media players that do not have an action in the emergency/delay state will have Proof of Play disrupted in the emergency/delay state.
- All TVs assigned to the emergency_zone will display the configured Emergency message when the Emergency ad hoc state is started by the Event Operator.

DMP and Location Relationships

Under **Configuration > Devices**, Cisco Vision Director identifies three object types for DMPs and Locations.

- DMP
- Location
- DMP+Location

After DMPs are deployed, they must be linked to **Locations** to change their state to **Ready** and to be able to stage content to them.

These object types can be created manually using the Cisco Vision Director web interface or uploaded using the Bulk Administration Tool (BAT). For more information about BAT, see the [Cisco Vision Director Bulk Administration Tool](#) document.

For information about adding Locations, see [Adding Locations Manually, page 74](#).

DMP Type

The DMP object type specifies the following information about the media player. This object can be manually added or automatically created by the device auto-registration process.

- Name—If you auto-register the device, then the name is automatically created from the MAC address (e.g., AUTO-00-0f-44-01-a5-ec).
- Unassigned—When a Location+DMP object is unlinked, the DMP object has name "Unassigned-xx-xx..." .
- Description—(Optional) Any additional information about the media player.
- IP Address—IP address of the media player.
- MAC Address—MAC address of the media player.
- Disabled—Device status. A value of "Yes" disables the device.
- Unicast Only—Use this in case you cannot use multicast.
- DMP Model—Type of media player model.
- Wifi Enabled—Yes or No enables the wifi capability on the device.

Location Type

The Location object type defines the physical location where the digital media player is installed in the venue, with the following information:

- Name—Location of the media player in the venue.
Note: Best practice: use a naming convention that allows an operator to easily identify where the TV is physically located in the venue.
- Description—(Optional) Any additional information about the location.
- Location ID—(Optional) Identifier for the location. This field is typically not used.

- Display Spec—Type of TV display at the location.

DMP+Location Type

DMPs must be linked to **Locations** to establish this object type and to put the digital media player in **Ready** state.

- Name—If you auto-register the device, then the name is automatically created from the MAC address (e.g., AUTO-00-0f-44-01- a5-ec).
- Unassigned—When a Location+DMP object is unlinked, the DMP object has name " Unassigned-xx-xx..." .
- Description—(Optional) Any additional information about the media player.
- IP Address—IP address of the media player.
- MAC Address—MAC address of the media player.
- Location ID
- Disabled—Device status. A value of " Yes" disables the device.
- Unicast Only—Use this in case you cannot use multicast.
- Display Spec—Use the drop-down to choose.
- DMP Model—Type of media player model.
- Wifi Enabled—Yes or No enables the wifi capability on the device.

For more information, see [Linking DMPs to Locations or Ready State, page 74](#).

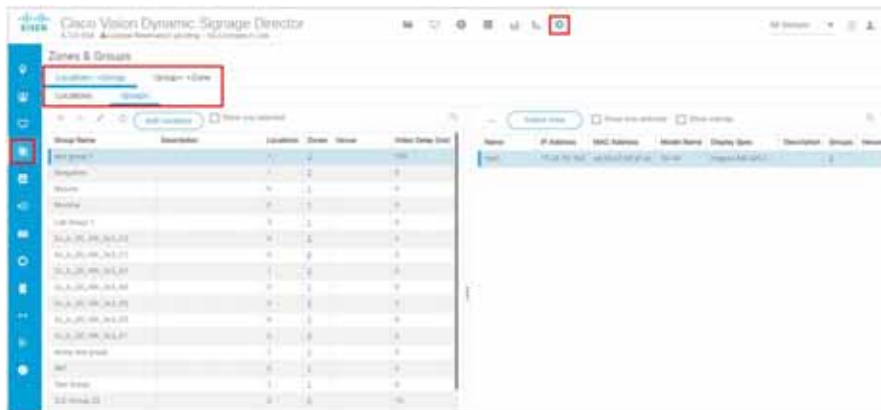
Zones & Groups Screen

From the **Zones & Groups** screen you can:

- Add, remove, and edit groups and zones.
- Add and remove multiple locations to / from groups and zones.
- View and manage zone, group, and location associations.
- View and search on the Location Name, IP Address, MAC Address, TV Details and TV Description, and number of groups to which the Location is assigned.
- Traverse the zones/groups and locations hierarchy. For example, you can view information top ↓down (from zones to groups to locations) and bottom ↑ up (from locations to groups to zones).
- Move multiple locations between groups (“re-grouping”) and move multiple groups between zones (“re-zoning”).
- View overlaps such as groups that share the same location or zones that share the same group.
- Find the group and zone to which a TV Location belongs.
- Find the group and zone by venue.

The **Zones & Groups** screen has a dividing bar so that you can display more information on the screen at once without having to jump back and forth between separate screens. Any items with a blue underline are a hyperlink ([Figure 5, on page 71](#).)

Figure 5 Zones & Groups Screen



Search and Show Selected Functions

Each panel in the **Zones & Groups** screen includes a search feature to help you find, filter and narrow the information displayed on the screen. You can search by:

- Location, zone, group, or venue name
- IP address
- MAC address
- TV details
- TV description

Type the search criteria (text strings or numbers) in the search box and click the magnifying glass. For example, if you type 'bar' in the search box on the Locations screen, all the locations with the word 'bar' in their name will display. Narrow the list and display only selected entries using the CTRL-click and SHIFT-click keyboard functions. Select the entries and then enable the checkbox next to **Show only selected** (Figure 6, on page 72).

Figure 6 Search and Show Functions



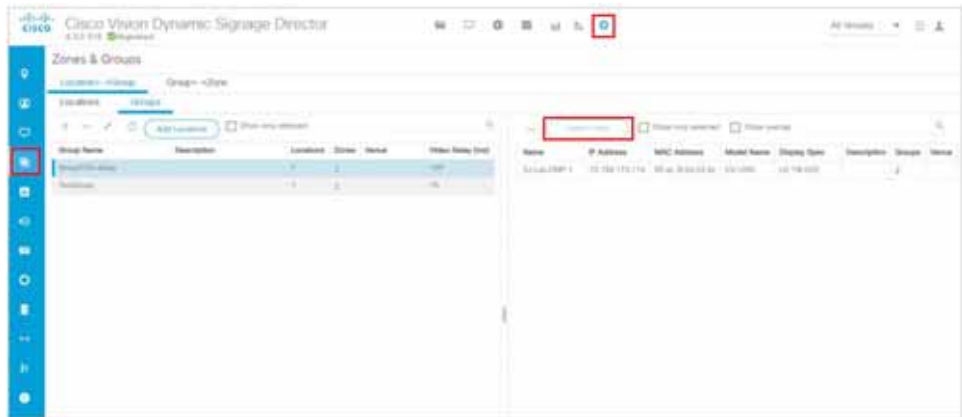
You can also sort a list by clicking on the column headings.

To clear the search criteria and display all items on the screen, uncheck the **Show only selected** option. To refresh the list, click the **Refresh** icon.

There are a number of ways to switch the view on the Zones & Groups screen. Click the **Switch View** option to flip the right and left panels on the screen. Depending on the information you are looking for or the operation you are performing, this can make it easier to transcend the hierarchy and find the different relationships between a location, a group, and a zone.

Another way to switch the view on the screen is to click the number links in the #Groups, #Locations, #Zones columns. For example, you can select a Location Name and then click the numbered link under #Location to show all the locations for a selected Group. Only the numbers with an underline are active links (Figure 7, on page 72).

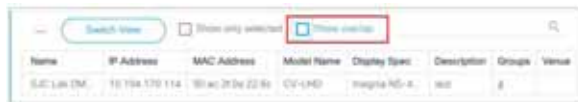
Figure 7 Switching the View on the Zones & Groups Screen



Showing Overlaps

You can easily see whether a zone, group, or location contains the same DMPs by selecting multiple entries and clicking the **Show Overlap** checkbox (Figure 8, on page 73). This is useful to identify and resolve conflicts that occur when actions are being assigned to DMPs that are in the same location, group, or zone. For example, in the following screen, there is no overlap between these three devices.

Figure 8 Showing Overlaps



How to Configure Locations

This section includes the following topics:

- [Guidelines for Naming Locations, page 73](#)
- [Adding Locations Manually, page 74](#)
- [Linking DMPs to Locations or Ready State, page 74](#)

Guidelines for Naming Locations

The optimal naming convention will vary from venue to venue, depending on size and layout. However, some recommendations can be provided for how to best create a systematic naming convention.

"100-NE-020" is an example of a good Location Name for the 20th display in the North East corner of Concourse 100.

Consider the following guidelines to create a systematic Location naming convention:

- Names should only use "A-Z" "a-z," "0-9," space (), underscore (_), and dash (-).

IMPORTANT: Do not use % * , : ? = / \ " ' { } () +

- Include floor or concourse levels.
- Include directional references such as (N) North, (S) South, (E) East and (W) West.
- Use a numeric suffix to differentiate between otherwise identical locations.

- Use generic names that are unlikely to change over time.

TIP: Use the Location Description if you want to refer to sponsor and room names. You can modify the description at any time without affecting the Location-to-Group mappings.

- Attach labels with Location Name to each TV in the venue. This simplifies identifying a problem TV and searching for it in the Cisco Vision Dynamic Signage Director.

TIP: Print the Location Name on the label as both text and in bar code so the label can be scanned during installation.

Adding Locations Manually

User Roles: Administrator, Content Manager, Event Operator

TIP: As a time saver, use the Bulk Administration Tool (BAT) to manage multiple configuration changes at once. For more information, see the [Cisco Vision Director Bulk Administrator Tool](#) document.

To add Locations manually:

1. Click **Configuration > Devices**.
2. Click **Locations & DMPs**.
3. Click **+Add**.
4. In the **Create New** dialog box, complete the following fields:
 - a. Type—Select **Location**.
 - b. Name—Naming convention for the location of the media player in the venue.

IMPORTANT: Do not use % * , : ? = / \ “ ‘ { } () +

For more information, see [Guidelines for Naming Locations, page 73](#).

- c. Description—(Optional) Any additional information about the location, or more readable form of the naming convention used in the Name field.
 - d. Location ID—(Optional) Identifier for the location. This field must be unique per location.
 - e. Display Spec—Select the type of TV display at the location.
5. Click **OK**. The added groups or locations are displayed in the adjoining panel view.

Linking DMPs to Locations or Ready State

User Role: Administrator, Content Manager, Event Operator

Linking or mapping a DMP with a Location is the final step in preparing a DMP to be able to stage content. Once a DMP is linked, it goes to “Read” state. Then, when content is staged it changes to “In Production” state.

This task describes how to manually link digital media players to locations. A faster method when you have multiple media player/location updates is to use the Bulk Administration Tool (BAT). For more information about BAT, see the [Cisco Vision Director Bulk Administration Tool](#) document.

Note: Mapping an AUTO DMP to a Location that already has a DMP mapped will overwrite the existing mapped DMP/Location assignment with the new DMP/Location assignment. The former mapped DMP will then return to the pool of AUTO/unassigned DMPs.

To manually link DMPs to Locations:

1. Click **Configuration > Devices**.

2. Click **Location-DMP Mapping**.
3. In the Available Devices list, select the MAC address of the DMP that you need to link.
4. In the Locations list, select the Location Name that you want to link to the selected DMP.
5. Click the **Link** icon (top left in the Locations panel).

Figure 9 Linking Devices



Unlinking DMPs from Locations

User Role: Administrator, Content Manager, Event Operator

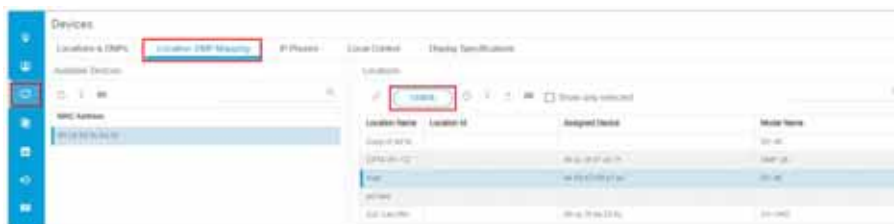
Unlinking DMPs from their assigned locations is required when you need to replace a failed device. For details about how to replace a failed device during an event, see [Replacing a Failed Media Player While an Event Script is Running](#), page 274.

This task describes how to manually unlink media players to locations. A faster method when you have multiple media player/location updates is to use the Bulk Administration Tool (BAT). For more information about BAT, see the [Cisco Vision Director Bulk Administration Tool](#) document.

To manually unlink DMPs from Locations:

1. Click **Configuration > Devices**.
2. Click **Location-DMP Mapping**.
3. In the Available Devices list, select the MAC address of the DMP to unlink.
4. In the Locations list, select the Location Name from which you want to unlink an associated DMP.
5. Click **Unlink**.

Figure 10 Unlinking Devices from Locations



Associating Venues to Locations for Multiple Venue Support

Locations can be associated with venues in a multi-venue environment.

For details about configuring multiple venue support in Cisco Vision Director, including associating locations to venues,

see the Configuring Cisco Vision Director for Multiple Venue Support module of the [Release 6.4: Cisco Vision Dynamic Signage Director Administration Guide](#).

How to Configure Zones and Groups

You can create a zone and group hierarchy and event script before you have added a single device in Cisco Vision Director. The locations and templates can be associated later. This can be useful, as usually you will know where devices will be before they are actually installed, allowing you to organize your TV locations in parallel with installation.

This section includes the following topics:

- [Best Practices for Zones and Groups, page 76](#)
- [Guidelines for Zones and Groups, page 78](#)
- [Guidelines for Naming Zones and Groups, page 78](#)
- [Limits for Deploying Zones and Groups for a for Mini-Scale Server Profile, page 80](#)
- [Accessing the Zones & Groups Screen, page 84](#)
- [Adding Zones, page 84](#)
- [Adding Groups, page 85](#)
- [Adding Groups to Zones, page 86](#)
- [Removing Groups from Zones, page 86](#)
- [Adding Locations to Groups, page 87](#)

Best Practices for Zones and Groups

Here are some helpful tips:

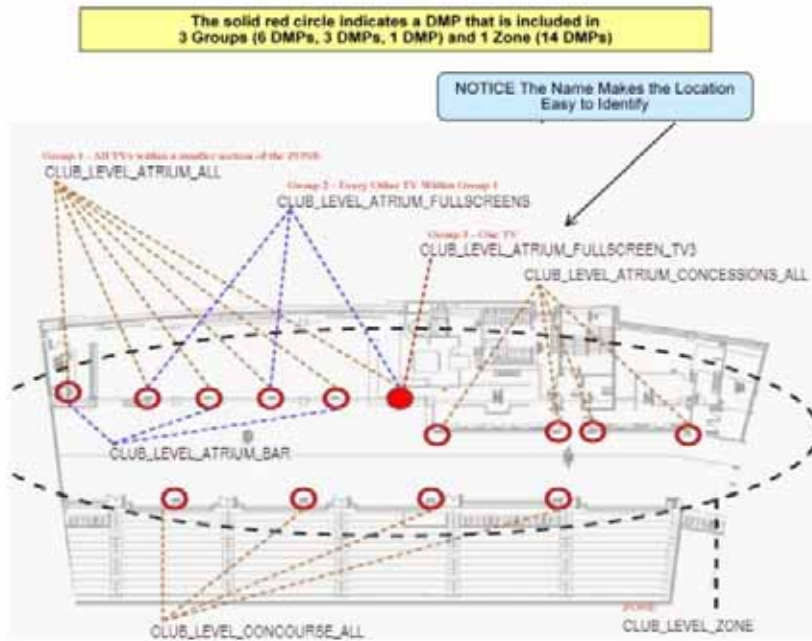
- The more groups and zones you have, the more complicated the deployment becomes.
- Do some careful planning to make your organization both simple and useful.
- Create groups of media players of the same model type. For example, the group contains all Cisco CV-UHD2s or all CV-HD2s.
- Create zones of like-model groups for best results. Applying the same state across multiple groups of different media player types can be problematic due to the differences in content support among different media player models.
- Quad-region template design is best utilized in a more private area, such as a luxury suite.

Note: If you must mix model groups in a zone, be sure the content reflects the lowest common denominator of support for the devices that you are mixing. Test your content for expected behavior. Consider many things such as dual video and video walls.

[Figure 11, on page 76](#) shows an example of how a DMP (indicated by the solid red circle) can fit into three different groups within one zone.

Note: Use careful judgment when creating single-DMP groups to reduce any extra processing for Cisco Vision Dynamic Signage Director. Good cases for single-DMP groups are video walls or suites where you need to control the content on individual TV displays.

Figure 11 Group and Zone Diagram Example



- Maintain easy-to-read naming conventions for groups using a logical and systematic naming convention.

Example: CLUB_LEVEL_ATRIUM_ALL = Group containing all of the DMPs in the Pucket Atrium of the Club Level. For more details, see [Guidelines for Naming Zones and Groups, page 78](#) or the guide that corresponds

- to your release on Cisco.com.
- Improve your DMP names whenever you come across one that is not clear.
- Keep the number of unique advertising areas, exit directions, and welcome screens to a minimum.
- Limit the number of screen templates for a given zone.
While it is possible for a zone to have different screen templates throughout the course of an event, the more screen templates you use, the more complex the deployment and administration becomes.

Guidelines for Zones and Groups

Consider the following guidelines when creating zones and groups:

- A DMP can be in different zones during each event.
- A DMP that is in multiple zones and groups cannot have more than one action assigned to it for a given event state.
- A DMP can be in only one group at a given state. However, a DMP can switch groups when in a different event state.
- Only one DMP type should be used in any zone and in the groups belonging to any zone. This ensures all media assigned to that zone or its groups has the same media playback capabilities.
- The maximum number of groups supported in a venue is 500.
- The maximum number of groups that is supported for a zone is 20; however, typically you'll have three or four groups for a given zone.
- The maximum number of zones supported in a venue is 100; however, 20 zones is typical for a given venue.
- The background for an RSS ticker can change per group/zone.
- All zone and group names must be unique.

Guidelines for Naming Zones and Groups

With thousands of displays and hundreds of zones and groups, naming is especially important.

A good way to keep your zones and groups organized is to use a text-based convention and then assign prefixes so that you can sort by similar groups and zones in the interface. This makes it easy to find devices by geographical or logical groupings.

Group Name

Make the group name the same as the DMP name so you have a ratio of 1:1 of DMPs to Groups.

Zone Name

These are truncated versions of the location names that make up the zone.

Level_Type_Name_Sec/Suite_Size (7SW_VW_CoorsBar_732_2x2 or 4NE_Con_HubBar_3x1_Menu)

Description Naming

Site specific, usually an IT naming structure or construction naming structure.

- Using long form names can complicate dashboard searches.
- An alphanumeric structure can be used here to add a second option when searching in Dashboard. (This is site specific and often used with new builds that have in depth blueprint plans.)

Playlist Naming

Information About Zones, Groups, and Locations

Each descriptor should only be used when appropriate to reduce playlist name length. (i.e., a playlist that runs all game doesn't require a "TIME" descriptor.)

- General
 - Script - Type Area **Size Screen** Time (VENUE - FS Concourse Pregame)
- Video Wall
 - Script - Type Area Size Screen **Time** (VENUE - VW HelixBar 3x3 A1)

Content Naming

Source_Type_Name_Subname.filename (SPON_Lwrap_COMPANYmp4 or CON_FS_HubBar_Menu.png)

- This is the basic structure for naming content. Some venues like to include dates, expiry dates, etc.
- Keeping names of content consistent and generic to the brand can assist in content replacement via upload. For example, a new piece of content for COMPANY can be uploaded to replace all running "old" content if the names are the same.

Template/Region Naming

Concession templates start with CON_ (CON_Menu_FS or CON_Menu_Right)

- Layer names are descriptors related to what content or playlist will be assigned to that layer in the script (background or widget).

VW templates can start with VW_ or just the size_ (3x3_B1).

- Layer names are the same as template names.
- Template names should include the venue in a multi-venue environment.

Examples:

100_Club_A_zone

100_Club_A _menus_group

100_Club_A _bar_group

100_Club_B_zone

100_Club_B _menus_group

100_Club_B _bar_group

If you have a very large club with hundreds of DMPs, you might have a zone called "Club A Menus" and then have individual groups with each group showing a different menu.

Consider the following guidelines to create a systematic Location naming convention:

- All group and zone names must be unique.
- Assign names to zones and groups that reflect the area where the display is located and the screen template or advertising playlist you will be using for that display.
- Names should only use "A-Z" "a-z," "0-9," space (), underscore (_), and dash (-).

IMPORTANT: Do not use % * , : ? = / \ " ' { } () +

- When naming zones, consider adding a prefix for the concourse level at the venue.

For example, add '100' to all clubs on the 100 level. This makes it easy to find and manage these clubs in Cisco Vision Director as they are sorted alphabetically.

- When naming groups, consider adding a suffix to identify where or what content will be displayed in the group.
- Add abbreviations to the group name to identify which screen template is being played by a given group.

This allows you to quickly identify what type of content is supposed to play on each group of TVs in the suite or other location in the stadium. [Figure 12, on page 80](#) shows abbreviations for identifying the different types of screen templates.

Figure 12 Abbreviation Examples for Identifying Templates in Groups



Server Profile Limitations

Limits for Deploying Zones and Groups for a Mini-Scale Server Profile

[Table 1, on page 80](#) defines the limits for deploying zones and groups in a mini/small scale server profile.

Table 1 Limits for Deploying Groups and Zones in a Mini/Small-Scale Server Profile

Specification	Limit Mini/Small
Maximum number of all media player devices in the system	1250
Maximum number of zones	25
Maximum number of groups	125
Maximum number of groups per zone	5
Maximum number of event states in a script	12
Maximum number of templates you can have in different groups and zones for a single script state	12
Maximum number of regions in a template	5
Maximum number of luxury suites	125
Maximum number of channel guides	125
Maximum number of contents in an entire script	300
Maximum number of playlists	250

Table 1 Limits for Deploying Groups and Zones in a Mini/Small-Scale Server Profile

Specification	Limit Mini/Small
Maximum number of playlists per group	25
Maximum number of items per playlist	300
Maximum number of scripts	50
Maximum number of simultaneously running scripts	5/25
Maximum number of venues	0
Maximum number of groups in a venue	125
Maximum number of data sources	50
Maximum number of DMPs that have widgets pulling data from Director	50
Maximum number of DMPS that have widgets in the system	50
Maximum data feed size sent over multicast	16KB

Table 2, on page 82 defines the limits for deploying zones and groups in a standard-scale server profile.

Table 2 Limits for Deploying Groups and Zones in a Standard-Scale Server Profile

Specification	Limit
Maximum number of all media player devices in the system	5000
Maximum number of zones	250
Maximum number of groups	5000
Maximum number of groups per zone	20
Maximum number of event states in a script	50
Maximum number of templates you can have in different groups and zones for a single script state	50
Maximum number of regions in a template	5
Maximum number of luxury suites	500
Maximum number of channel guides	500
Maximum number of contents in an entire script	1200
Maximum number of playlists	1000
Maximum number of playlists per group	100
Maximum number of items per playlist	1200
Maximum number of scripts	200
Maximum number of simultaneously running scripts	100
Maximum number of venues	25
Maximum number of groups in a venue	100
Maximum number of data sources	100
Maximum number of DMPs that have widgets pulling data from Director	200
Maximum number of DMPS that have widgets in the system	200
Maximum data feed size sent over multicast	16KB

Table 3, on page 82 defines the limits for deploying zones and groups in a large-scale server profile.

Table 3 Limits for Deploying Groups and Zones in a Large-Scale Server Profile

Specification	Limit
Maximum number of all media player devices in the system	5000
Maximum number of zones	250
Maximum number of groups	5000
Maximum number of groups per zone	20
Maximum number of event states in a script	25
Maximum number of templates you can have in different groups and zones for a single script state	50
Maximum number of regions in a template	5

Table 3 Limits for Deploying Groups and Zones in a Large-Scale Server Profile

Specification	Limit
Maximum number of luxury suites	500
Maximum number of channel guides	500
Maximum number of contents in an entire script	1200
Maximum number of playlists	2200
Maximum number of playlists per group	100
Maximum number of items per playlist	1200
Maximum number of scripts	500
Maximum number of simultaneously running scripts	250
Maximum number of venues	250
Maximum number of groups in a venue	100
Maximum number of data sources	250
Maximum number of DMPs that have widgets pulling data from Director	200
Maximum number of DMPS that have widgets in the system	200
Maximum data feed size sent over multicast	16 KB

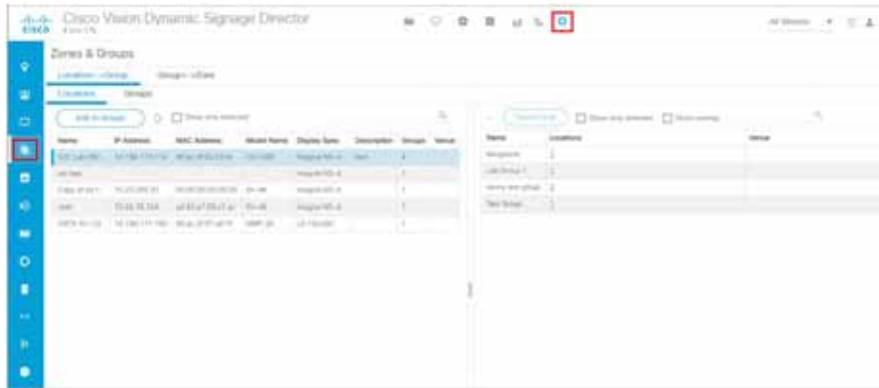
Accessing the Zones & Groups Screen

User Roles: Administrator, Content Manager, Event Operator

To access the Zones & Groups screen:

1. Click **Configuration > Groups & Zones**. The Zones & Groups screen displays (Figure 13, on page 84).

Figure 13 Zones & Groups Screen



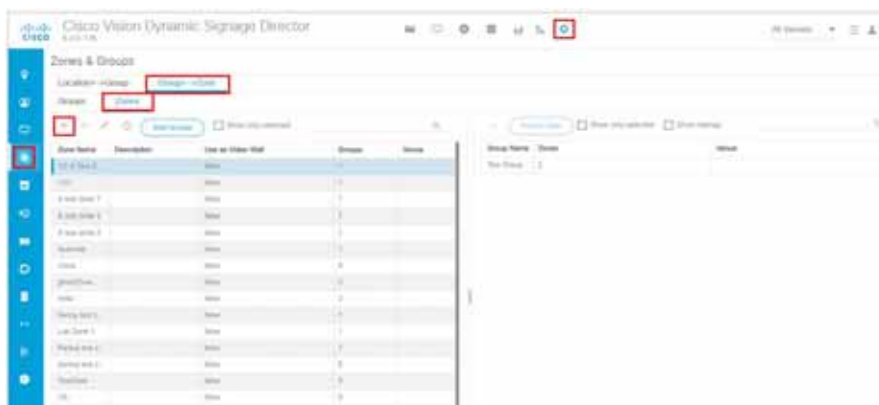
Adding Zones

User Roles: Administrator, Content Manager, Event Operator

To add a zone:

1. Click **Configuration > Groups & Zones**.
2. Click the **Group<->Zone** tab.
3. Click **Zones** (Figure 14, on page 84).

Figure 14 Group<->Zone, Zone Tab



4. Click the + icon. The New Zone dialog box appears (Figure 15, on page 84).

Figure 15 Creating a New Zone



5. In the New Zone dialog box, do the following:

- a. Type a name for the group.
- b. Type a description of the group.

TIP: You can leave the description for the group blank and add it later.

- c. (SV-4K, CV-UHD and CV-UHD2 only) To configure zone-based video wall synchronization, select the **Use as Video Wall** checkbox.

IMPORTANT: DMPs for a video wall must be 4K/UHD only.

For more information, see [How to Configure Video Walls with the Digital Media Players, page 204](#).

6. Click **OK**. The new zone appears in the Zone Name list.

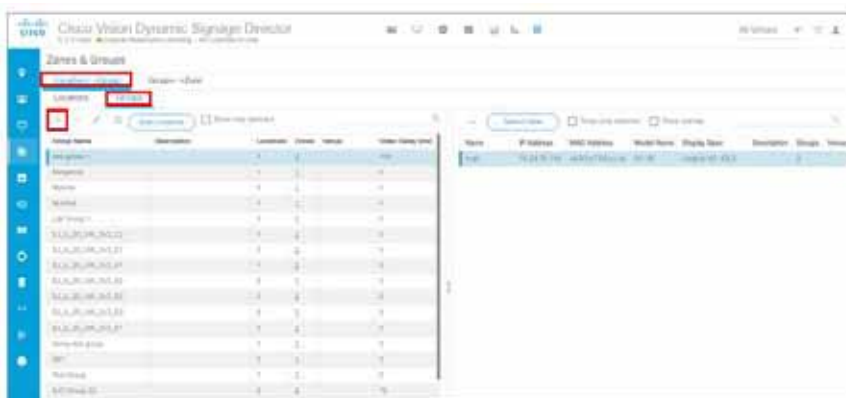
Adding Groups

User Roles: Administrator, Content Manager, Event Operator

To add a group:

1. Click **Configuration > Groups & Zones**.
2. Click either the **Location<->Group** or **Group<->Zone** tab.
3. Click **Groups** ([Figure 16, on page 85](#)).

Figure 16 Location<->Group, Group Tab



4. Click the + icon. The New Group dialog box appears ([Figure 17, on page 86](#)).

5. In the New Group dialog box, type a name, description, and a video offset value if you plan to use this group in a video wall. It's important to compensate for video offset delay.

For more information of video offset values, see [Configuring Groups and Zones for Zone-Based Video Wall Synchronization for the DMPs, page 207](#).

6. Click **OK**. The new group appears in the Group Name List.

TIP: Do not use spaces in group names.

Figure 17 Creating a New Group



Adding Groups to Zones

User Roles: Administrator, Content Manager, Event Operator

To add groups to zones:

1. Click **Configuration > Groups & Zones**.
2. Click **Group<->Zone**.
3. Do one of the following:
 - a. To select by group(s) and add zones to those groups, click **Groups**.
 - b. To select by zone(s) and add groups to those zones, click **Zones**.
4. Select the group(s) or zone(s) depending on the panel view that you are using.

TIP:

- To narrow the display listing, use the search function.
 - To select multiple items in the list, use Ctrl-click or Shift-click keyboard/mouse sequence.
5. Do one of the following:
 - a. If using Groups view, click **Add to Zones**.
 - b. If using Zones view, click **Add Groups**.
 6. Do one of the following:
 - a. In the **Select Zones** dialog box, select the zones to which the selected group(s) are added.
 - b. In the **Select Groups** dialog box, select the groups to be added to the selected zone(s).
 7. Click **OK**. The added zones or groups are displayed in the adjoining panel view.

Removing Groups from Zones

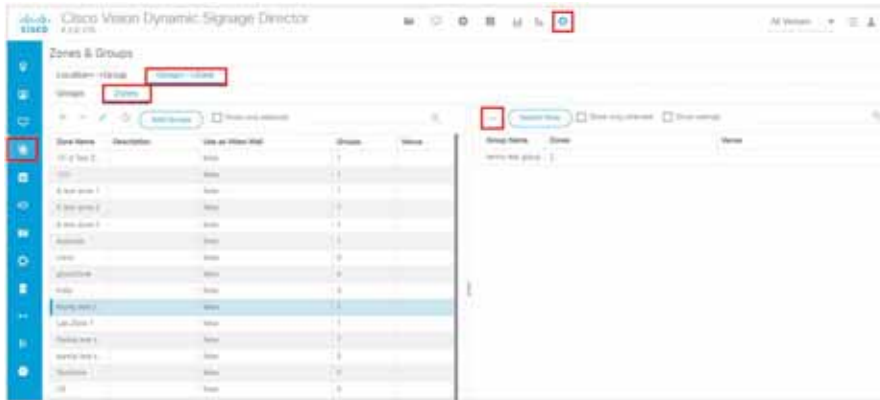
User Roles: Administrator, Content Manager, Event Operator

To remove groups from zones:

1. Click **Configuration > Groups & Zones**.
2. Click **Group<->Zone > Groups** (Figure 18, on page 87).

Note: Remove groups from zones by clicking **Zones** and selecting the zone and corresponding groups to be removed from that zone. Click **Remove from Zones**.

Figure 18 Removing Groups from Zones



3. In the Groups panel, select the group.
4. In the Zones panel, select the zone to be removed from the group.
5. Click **Remove**.
6. In the confirmation dialog box, click **Delete** (Figure 19, on page 87).

Figure 19 Confirm Deletion and Remove Association



Adding Locations to Groups

User Roles: Administrator, Content Manager, Event Operator

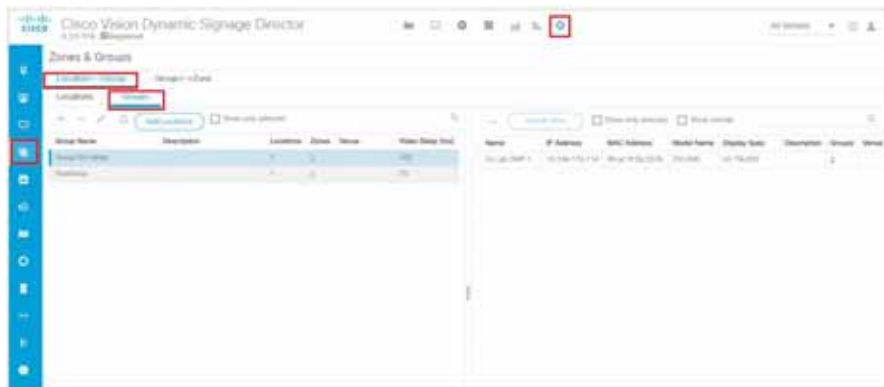
IMPORTANT:

- Before you can add locations to groups and zones, you must add the device location in **Configuration > Devices**.
- If you are migrating deployed devices from a single venue to a multi-venue system, follow the required steps for proper location association in the [Configuring Cisco Vision Dynamic Signage Director for Multiple Venue Support](#), page 35 of the [Cisco Vision Administration Guide: Dynamic Signage Director, 6.4](#).

To add locations to groups:

1. Click **Configuration > Groups & Zones**.
2. Click **Location<->Group** (Figure 20, on page 87).

Figure 20 Adding Locations to Groups



3. Do one of the following:
 - a. To select by location(s) and add groups to those locations, click **Locations**.
 - b. To select by group(s) and add locations to those groups, click **Groups**.
4. Select the location(s) or group(s) depending on the panel view that you are using.

TIP:

- To narrow the display listing, use the search function.
- To select multiple items in the list, use Ctrl-click or Shift-click keyboard/mouse sequence.

5. Do one of the following:
 - a. If using Locations view, click **Add to Groups**.
 - b. If using Groups view, click **Add Locations**.
6. Do one of the following:
 - a. In the **Select Groups** dialog box, select the groups to which the selected location(s) are added (Figure 21, on page 88).
 - b. In the **Select Locations** dialog box, select the locations to be added to the selected group(s). (Figure 22, on page 88).

Figure 21 Select Group**Figure 22** Select Locations



7. Click **OK**. The added groups or locations are displayed in the adjoining panel view.

Managing Zones, Groups, and Locations

Once you have added zones, groups, and locations in Cisco Vision Director, you can use the Zones & Groups screen to display, manage, and edit information on the selected zone, group, or location as described in this section.

Editing the Name and Description of Zones and Groups

User Roles: Administrator, Content Manager, Event Operator

To edit the name and description of a zone and group:

1. Click **Configuration > Groups & Zones**.
2. Click **Group<->Zone**.
3. Do one of the following:
 - a. To edit a group, click **Groups** (Figure 23, on page 89).
 - b. To edit a zone, click **Zones** (Figure 24, on page 89).

Figure 23 Edit Group



Note: Be aware if the zone is part of a video wall. If so, check the box.

Figure 24 Edit Zone



4. In the left panel view, select the group or zone that you want to edit.

Information About Zones, Groups, and Locations

5. Select **Edit** (pencil icon) to open the Edit dialog box.
6. Change the name and description as needed.
7. Click **Save**.

Viewing Zone, Group, and Location Associations

Click the Zones, Groups, and Locations tabs on the Zones & Groups screens to display the zones, groups, and location lists in the left column of the Zones & Groups screen. To view information about an item in the list, select it. The associated information will display in the right column on the screen. The numbers in each column indicate the number

of zones, groups, and locations are associated with the selected item. Numbers that are underlined in blue are hot links that you can click to display more details about the selected item. The details display in the opposite side of the screen (Figure 25, on page 91).

In the example shown below, there is 1 zone for the Lab Group 1 group. When you click the number '1' link, the screen displays the Zone Name, the Description (if any), if it's used as a video wall, the number of Groups this Zone is part of, and the Venue. The information displays in the Zones panel on the right (Figure 26, on page 91).

Figure 25 Locations Detail Panel

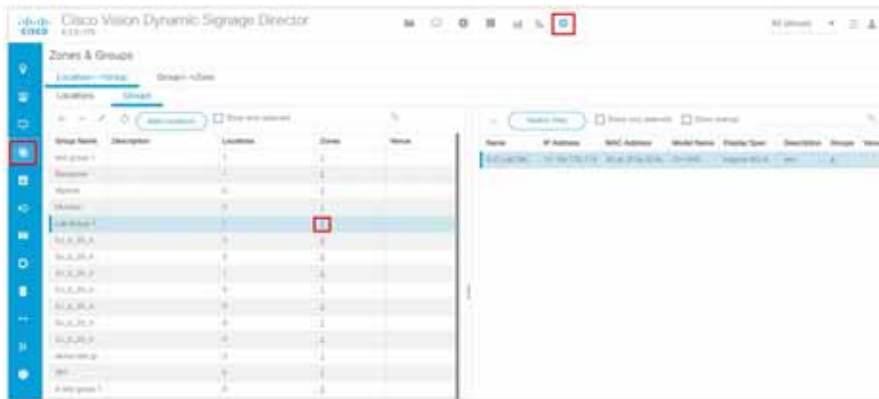
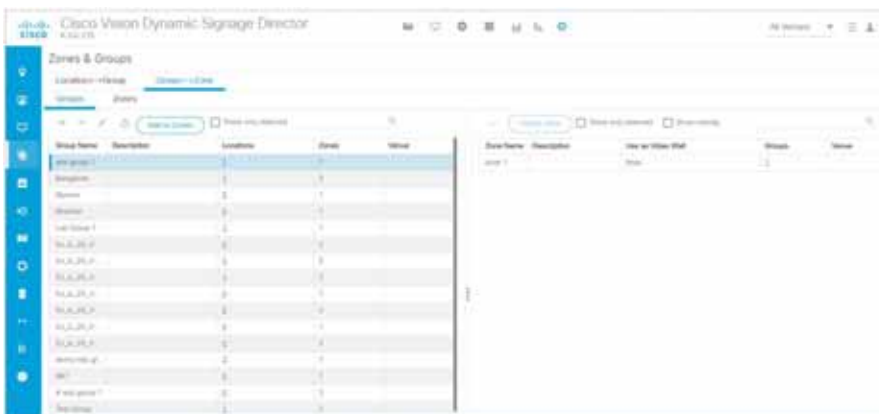


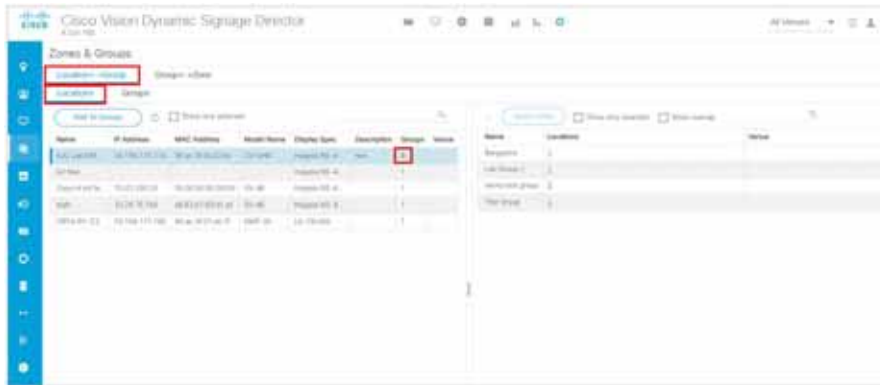
Figure 26 Zones Detail Information



Finding the Group and Zone to Which a TV Belongs

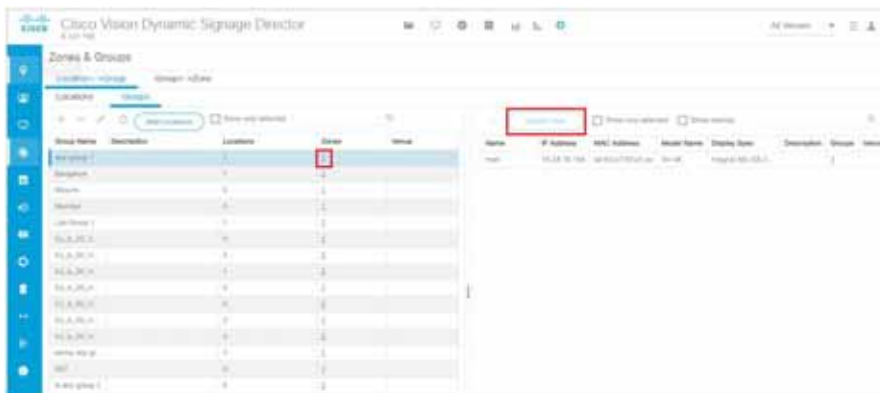
1. Click **Configuration > Groups & Zones**.
2. Select the **Location <-> Group** tab and select the **Locations** tab.
3. Select a location name. In this example, SJC Lab DMP 01 is selected. The number of groups to which this location belongs shows under the Groups column (in this example, there are 4 groups). The names of the groups to which this location belongs display in the Groups panel at the right (Figure 27, on page 91).

Figure 27 Finding the Group and Zone for a TV



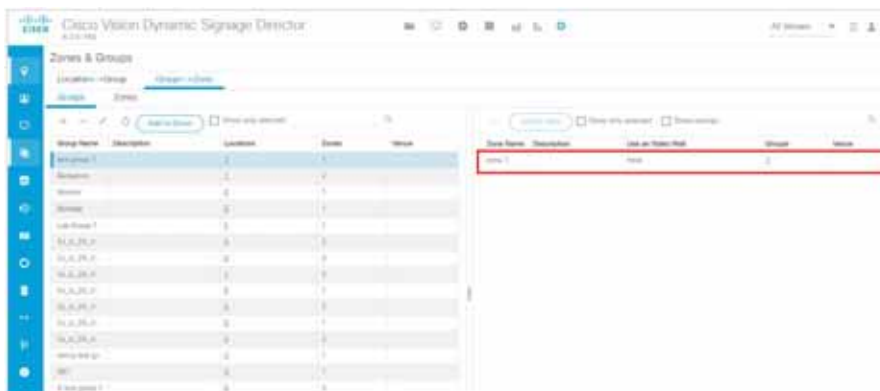
4. Select a group from the Groups panel and click **Switch View**. The number of Zones for the selected group displays (Figure 28, on page 92) under Zones (in this example, there is 1 zone).

Figure 28 Number of Zones

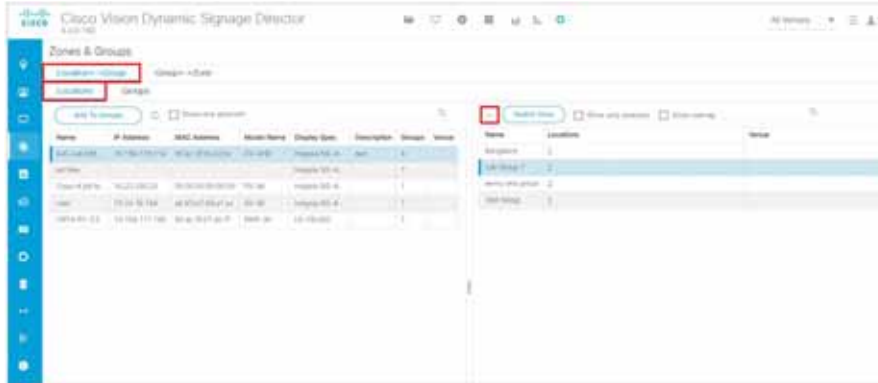


5. With the Group name selected, click on the number link in the #Zones column to show the zones (Figure 29, on page 92) to which the selected group belongs (in this example, test group 1 belongs to 1zone).

Figure 29 Zones a Selected Group Belongs



6. Click the **Location<->Group** tab and click the **Locations** tab.
7. Select the locations from the left column and the groups from the right column and click **Remove** (Figure 30, on page 93).

Figure 30 Removing a Group

A confirmation dialog box appears for you to confirm or cancel the operation.

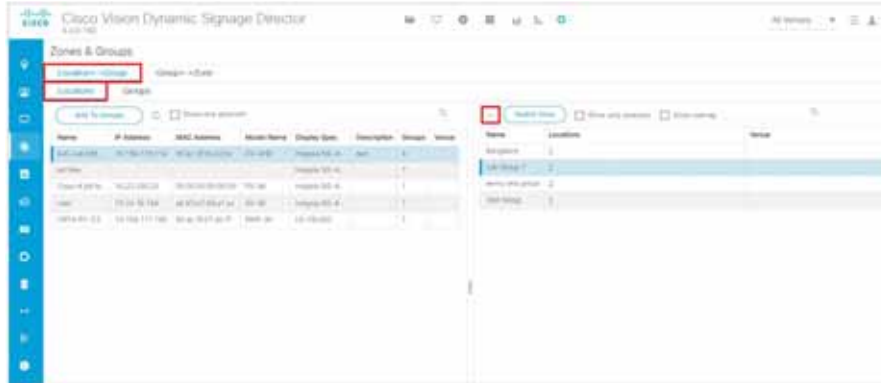


Click **Delete** to remove the locations from the selected groups. Once removed, they will no longer show in the groups list for those locations.

Regrouping and Rezoning Locations

Once you have added and assigned locations to groups, you can regroup them by removing all the locations from the selected groups and then re-assigning the locations to other groups as described here.

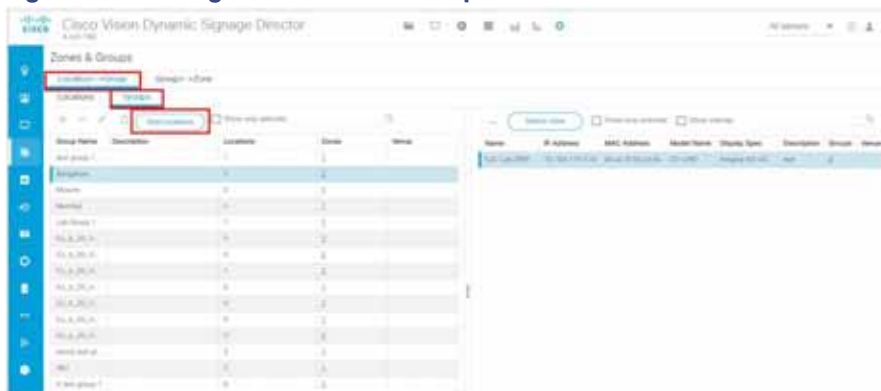
1. Click **Configuration > Groups & Zones**.
2. Select the **Location<->Group** tab and the **Locations** tab (Figure 31, on page 94).
3. Select the locations that you want to re-group. The Groups panel on the right will display the groups assigned to the selected DMPs.
4. Select the groups from the Groups panel. You can use the shift click keyboard function to select a block of groups. The selected groups and locations are highlighted on both the Locations and the Groups panels.
5. Click **Remove** to remove all the locations from the selected groups. A warning dialog displays for you to confirm or cancel the operation.

Figure 31 Regrouping or Rezoning a Device

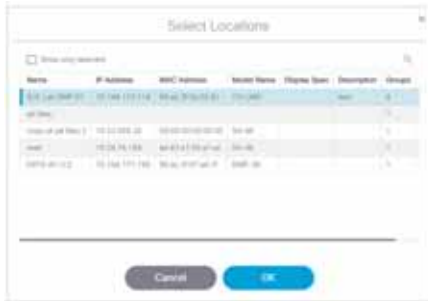
6. Click **Delete**. The selected groups will be removed from the Groups panel.



7. Select the **Location<->Group>** tab and select **Groups** tab.
8. Select a group. You can use the search function to quickly find the group you are looking for.
9. Select the locations you want to add to the selected group from the Locations panel.
10. Click **Add Locations** (Figure 32, on page 94).

Figure 32 Adding a Location to a Group

11. Select the locations you want to add from the Select Locations screen (Figure 33, on page 95) and click **OK**. The locations are added to the list of locations for the selected group(s). The Locations column indicates how many locations are now in the selected group.

Figure 33 Select Locations

How to Migrate Deployed Devices From a Single Venue to a Multiple Venue System

There are very specific requirements when you migrate devices that have already been deployed in a venue to a multiple venue configuration in Cisco Vision Director.

For more information, see [Configuring Cisco Vision Dynamic Signage Director for Multiple Venue Support, page 35](#) in the [Cisco Vision Director Administration Guide: Dynamic Signage Director, 6.4](#).

