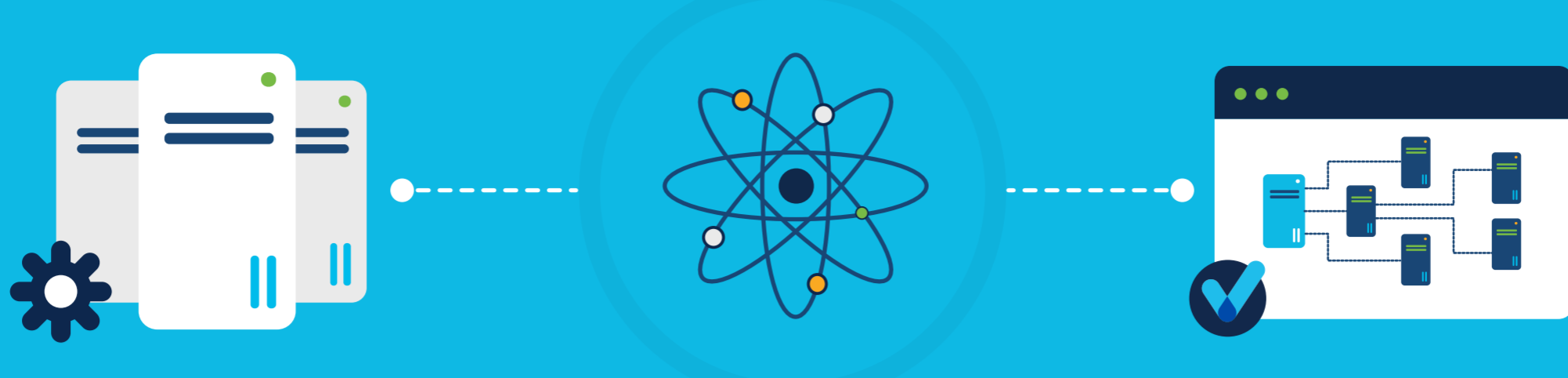
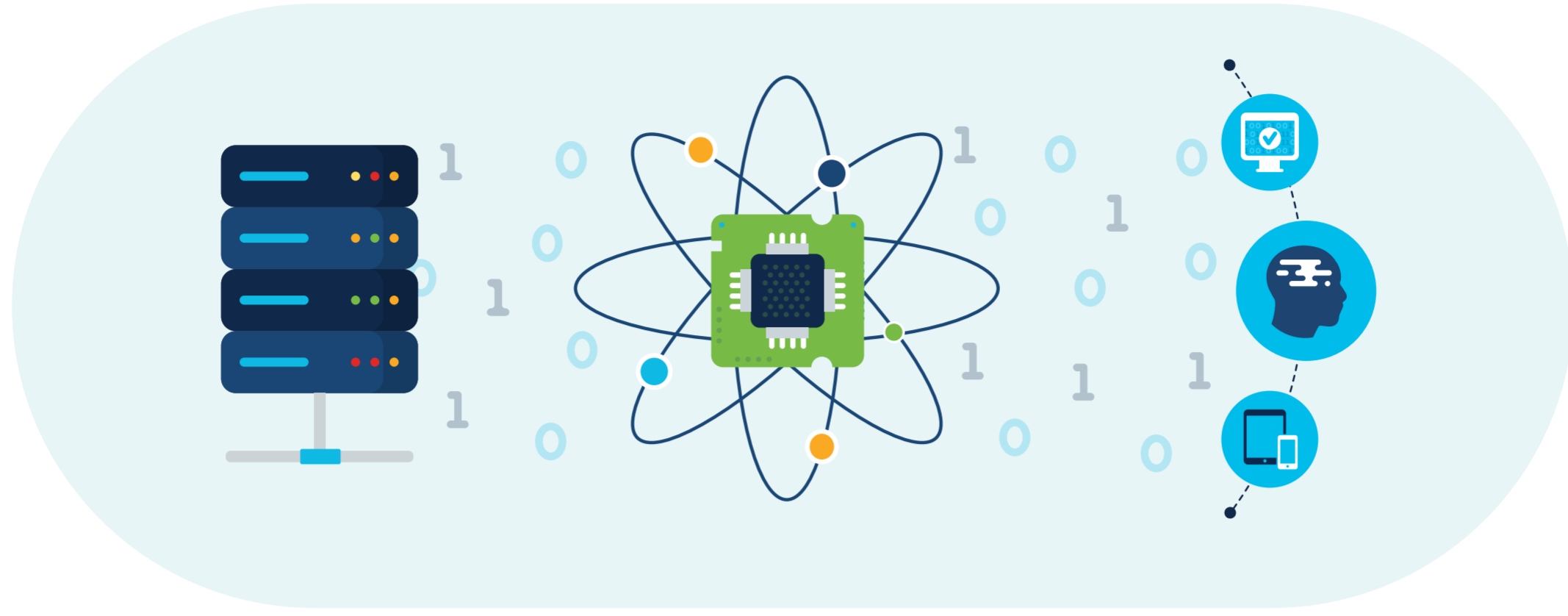


Power Your NetDevOps Transformation with Cisco Modeling Labs – Enterprise



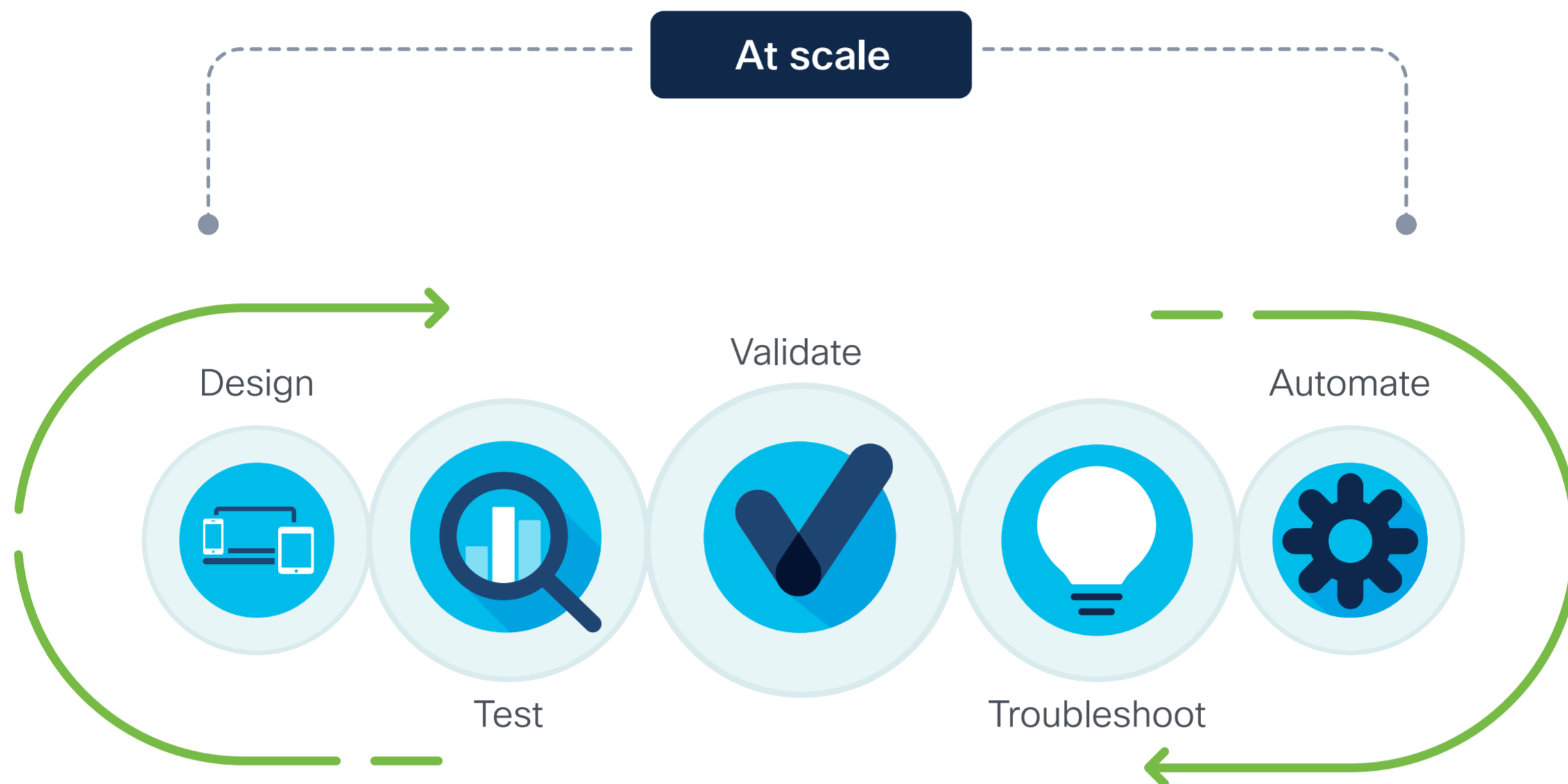
Welcome to the age of network automation

Software enables IT to scale in ever new ways



But that means your lab environment needs to scale too

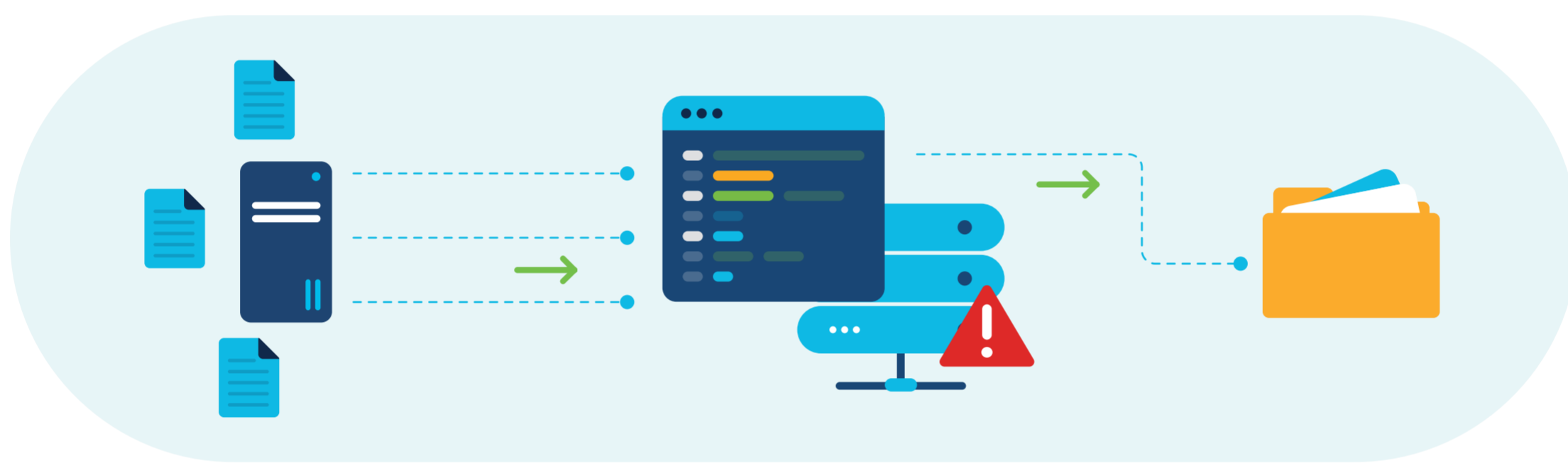
To model complex networks, to simulate automation



Physical labs cannot keep up

They're too expensive. Too time-consuming. Too energy-intensive.

And the pace of business means we all have to leap into the NetDevOps future today—developing and deploying network changes in a continuous integration/continuous delivery (CI/CD) pipeline.

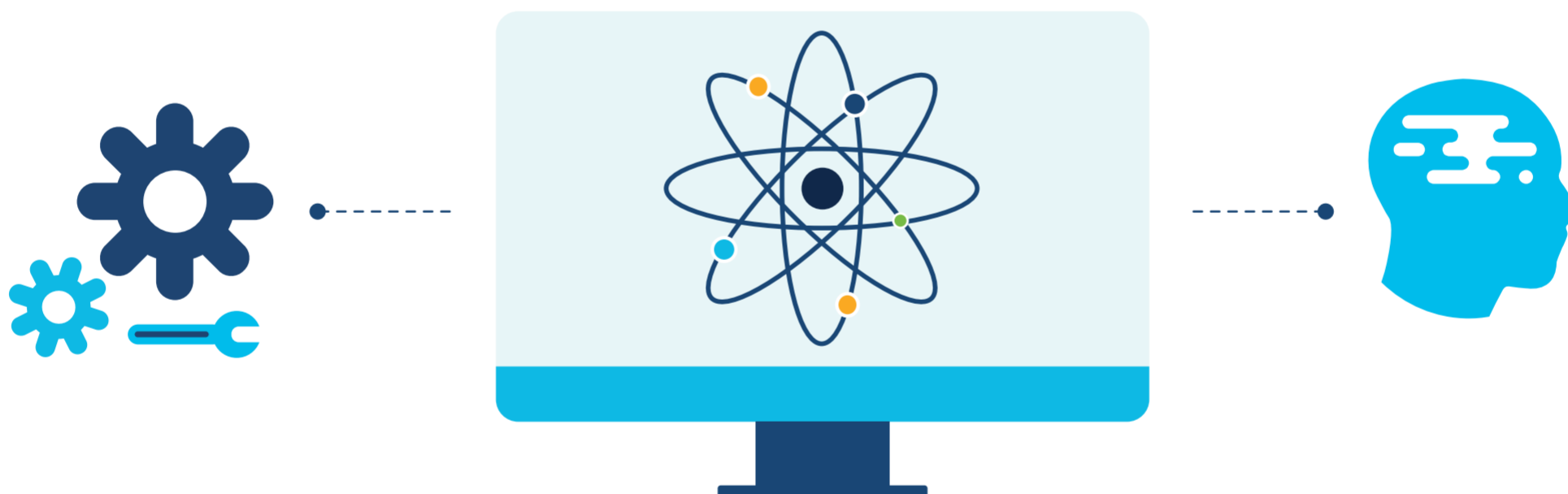


That's where Cisco® Modeling Labs comes in

Cisco Modeling Labs – Enterprise is our premier network simulation tool.

With this multiuser, on-premise, shared-lab solution, your whole team can collaborate, and engineers can build and manage their own labs.

And Cisco Modeling Labs uses an API for all interactions with the simulation engine. You can use that API too—and that's how you turbocharge your NetDevOps journey.



And Cisco Modeling Labs just keeps on giving



A lean, mean simulation platform

The new multiuser feature lets you create and manage groups to control lab access.



Lab-based approach

You can build individual labs to share among engineers or keep private labs for individuals.



Comprehensive API

Anything you can do in the UI, you can do via the API—and then some.



Cisco network platform support

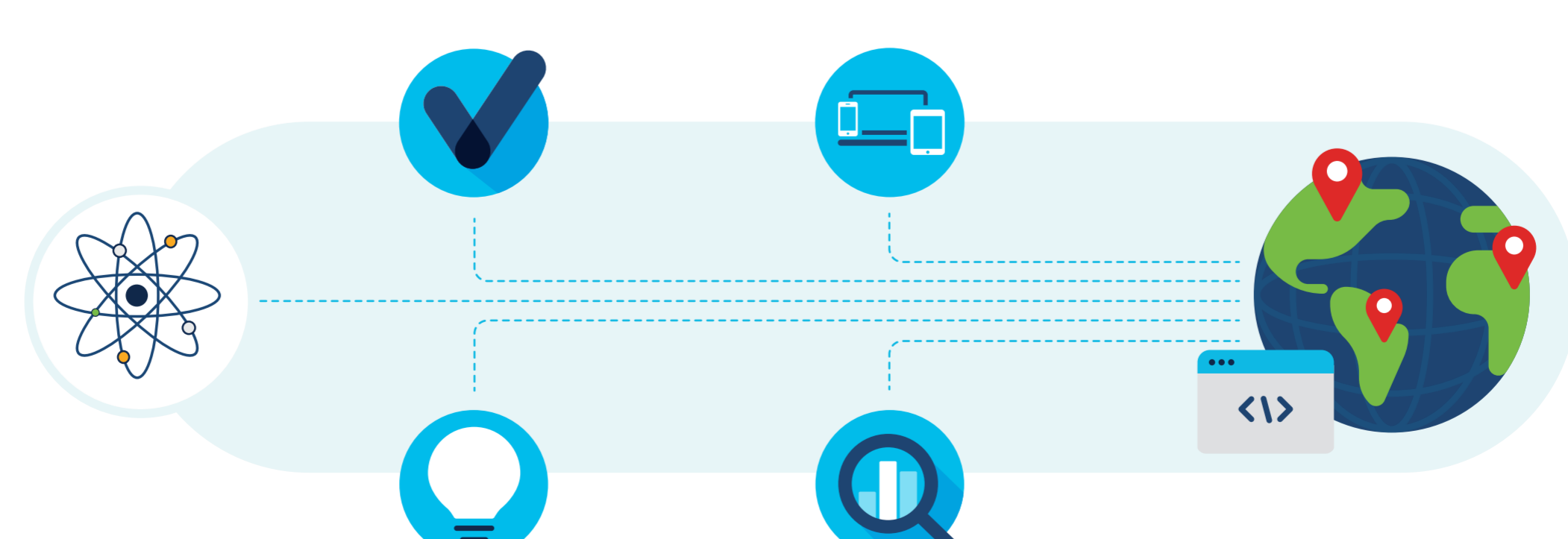
Cisco Modeling Labs supports IOS, IOS-XE, IOS-XRv, NX-OS, ASA, and utility images like Linux hosts, and Cisco's TRex traffic generator.



Third-party support

Add Linux KVM virtual machines to your simulations using the included image import tools.

Life is good when you can lab from anywhere



It's a new day for network simulation and automation

Put the power of Cisco Modeling Labs to work for your team today.

[Learn more](#)